



THE TRITON

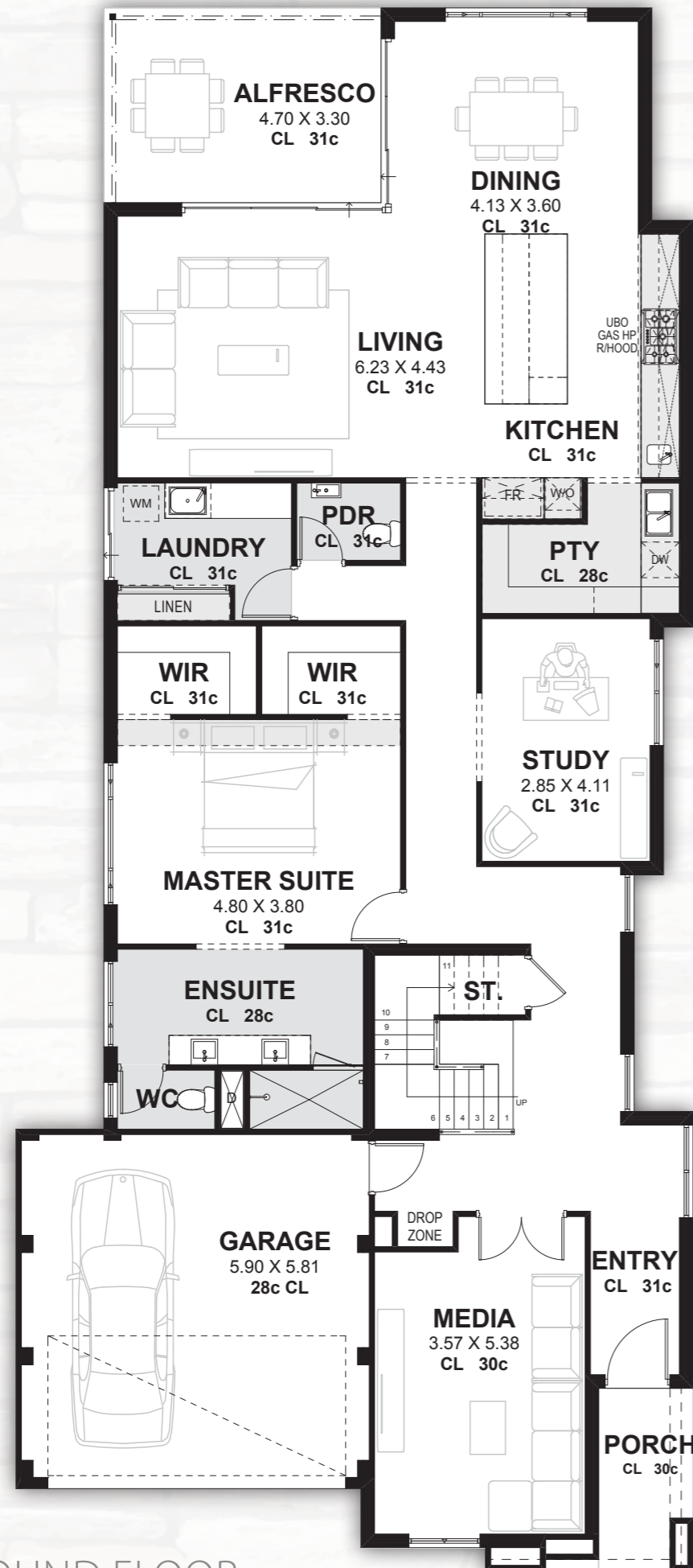


For illustration purposes only

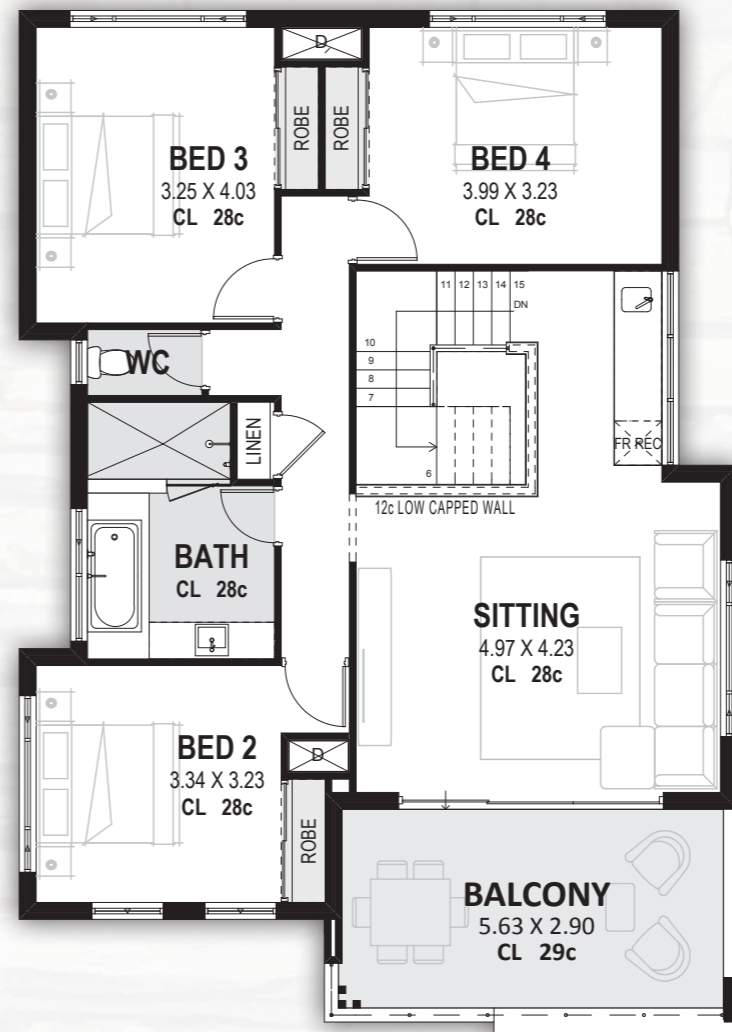
LIVE YOUR BEST LIFE

THIS HOME IS PART OF THE

SIGNATURE SERIES



GROUND FLOOR



UPPER FLOOR

The Signature Series is a range of sophisticated and contemporary homes designed to help you live your best life. Built with a level of master craftsmanship that you expect from a premium builder.

Our team of building consultants and dedicated in-house designers can work with you to tailor this home to perfectly suit your lifestyle and make it uniquely yours.



THE TRITON

SUITABLE FOR FRONTAGES FROM 12.5 METRES

HOW IT MEASURES UP

Frontage	11.48m
Depth	26.48m
Area – Ground Floor	
Living	200.85m ²
Garage	36.05m ²
Alfresco	15.51m ²
Porch	4.32m ²
Total – Ground Floor	256.73m²
Area – Upper Floor	
Living	105.31m ²
Balcony	15.97m ²
Total – Upper Floor	121.28m²
GRAND TOTAL	378.01m²



CELEBRATING
30
 YEARS
 OF AWARD
 WINNING HOMES

www.novushomes.com.au



32 Mumford Place Balcatta WA 6021 | Telephone: 08 9240 8001 | BC104687

© Novus Homes | All plans and information in this brochure are copyright protected by Novus Homes. ANP Building Group Pty Ltd. ACN: 663 212 520.