

# THE HAMELIN



  
novushomes

[novushomes.com.au](http://novushomes.com.au)



# SIMPLY ELEGANT

Part of our Vision Series, the Hamelin is a 4 bedroom, 3 bathroom 'Hampton's Style' home designed for lots from 15 metres wide.

This spacious family home really captures that American coastal feel that has become so popular in Perth's premium suburbs.

Drawing from over 30 years of building experience, the Hamelin delivers you luxury throughout with a price that will surprise you.



# LIVE YOUR BEST LIFE

At Novus we're committed to building a home that epitomises the very best that life has to offer.

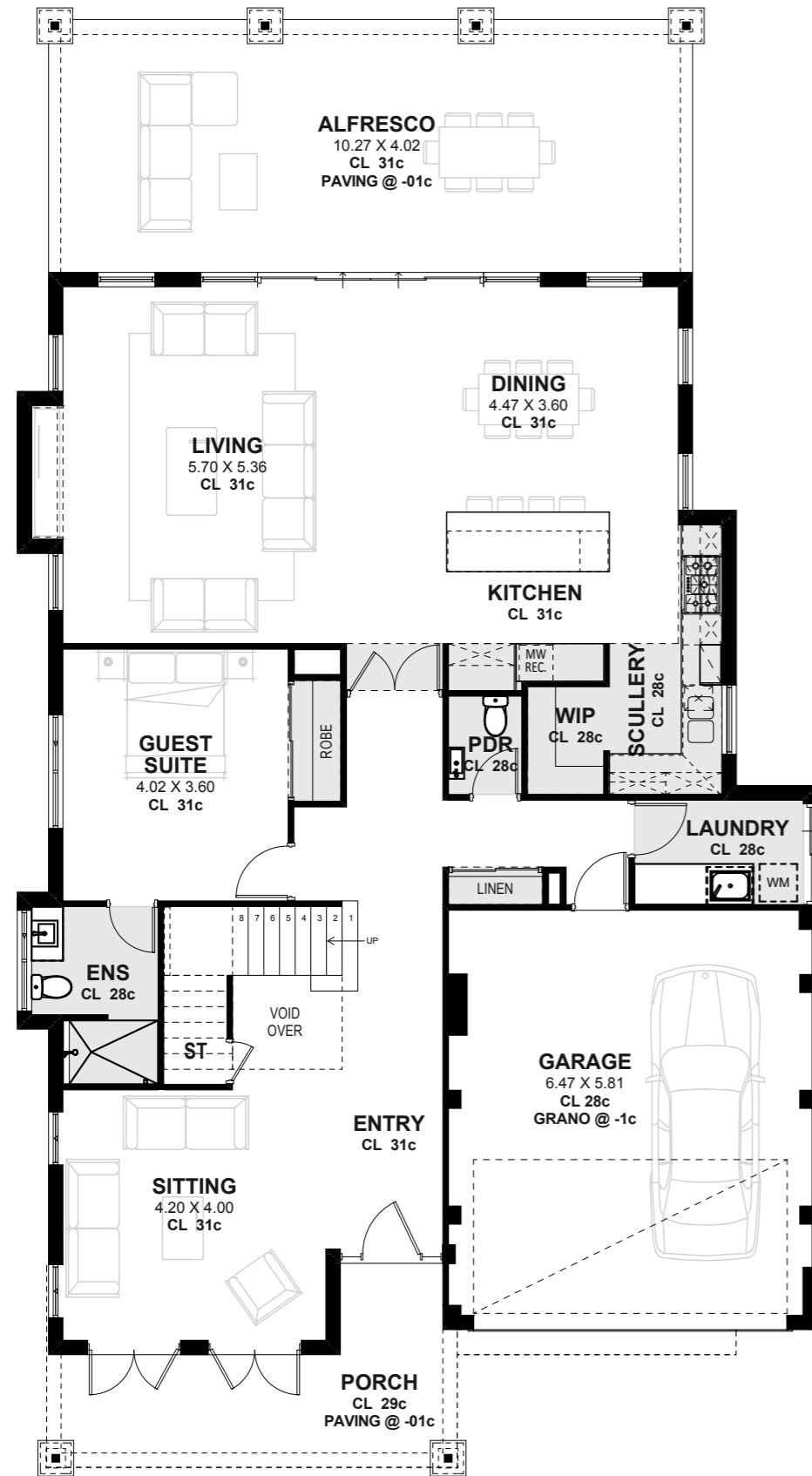
A home that will not only suit your lifestyle, but your budget too.

Our team of building consultants and dedicated in-house designers can work with you to create a home that will help you live your best life.

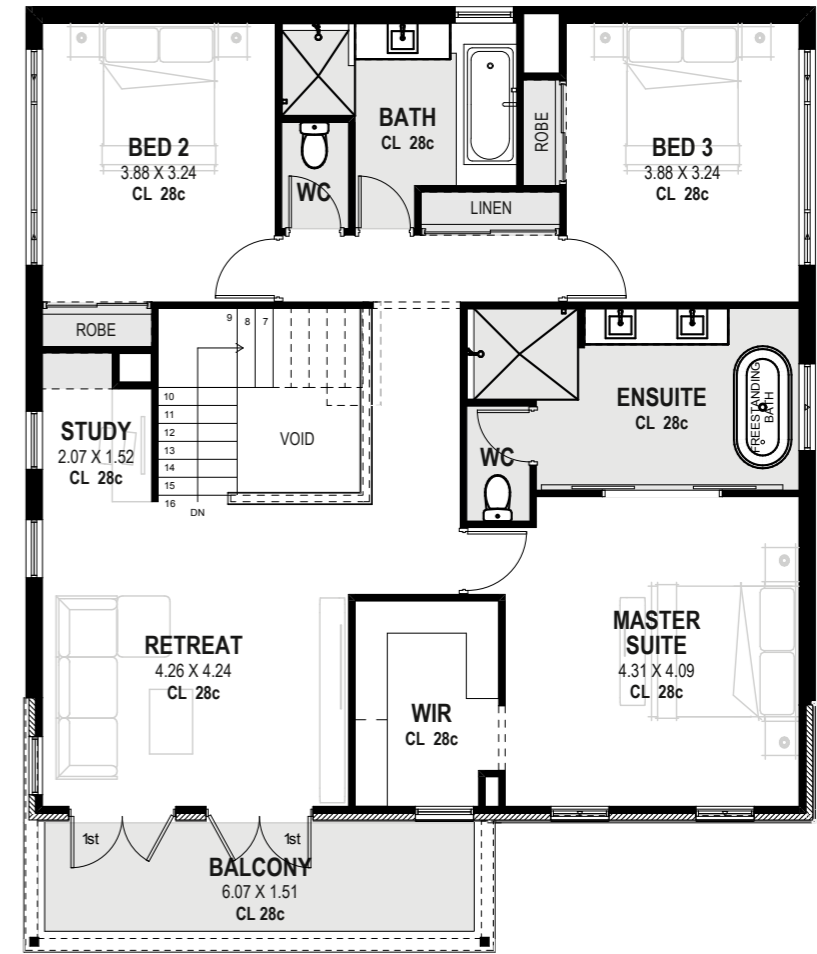


# THE HAMELIN

This home is part of the  
*Vision* SERIES



GROUND FLOOR



FIRST FLOOR

## HOW IT MEASURES UP

SUITABLE FOR FRONTAGES FROM 15 METRES

Frontage .....12.79m

Depth .....23.38m

### Area – Ground Floor

Living ..... 157.15m<sup>2</sup>

Alfresco ..... 44.28m<sup>2</sup>

Garage ..... 39.62m<sup>2</sup>

Porch ..... 14.47m<sup>2</sup>

Total – Ground Floor ..... 255.52m<sup>2</sup>

### Area – Upper Floor

Living ..... 124.87m<sup>2</sup>

Balcony ..... 11.81m<sup>2</sup>

Total – Upper Floor ..... 136.68m<sup>2</sup>

**GRAND TOTAL** ..... 392.20m<sup>2</sup>



novushomes.com.au

32 Mumford Place Balcatta WA 6021  
08 9240 8001

---

CELEBRATING 30 YEARS  
OF AWARD WINNING HOMES

---



BC104687

© Novus Homes | All plans and information in this brochure are copyright protected by Novus Homes.  
ANP Building Group Pty Ltd ACN: 663 212 520.