



THE OPORIUM

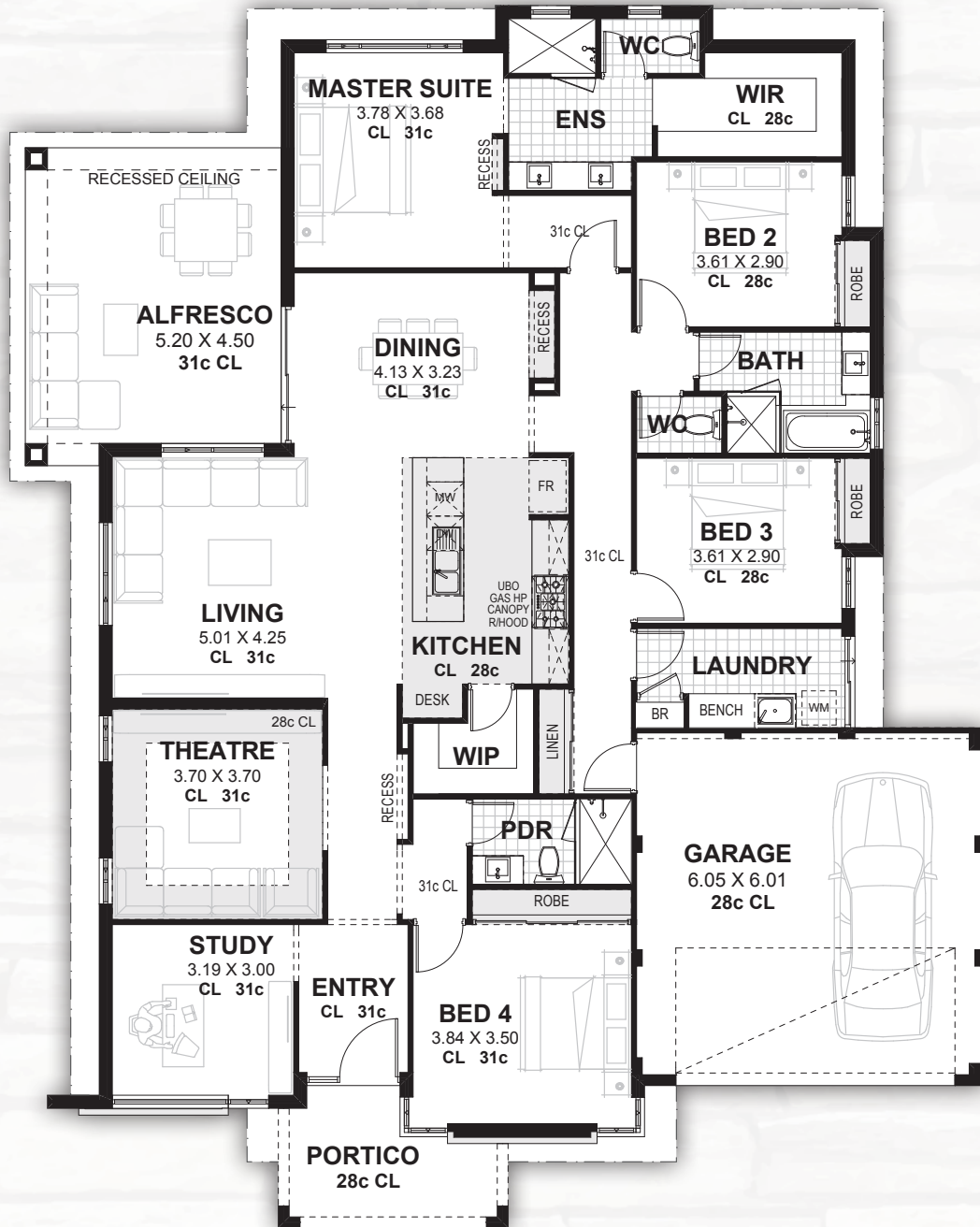


For illustration purposes only

LIVE YOUR BEST LIFE

THIS HOME IS PART OF THE

SIGNATURE SERIES



THE OPORIUM

SUITABLE FOR FRONTAGES FROM 18 METRES

HOW IT MEASURES UP

Frontage	16.89m	Area	
Depth	21.49m	Living	209.09m²
		Garage	38.28m²
		Alfresco	23.91m²
		Portico	8.06m²
		GRAND TOTAL	279.34m²



2020 HIA-CSR Australian
Housing Awards
WINNER
Display Home



JOINT MBA AND HIA WINNER