



THE ACCLAIM ADVANTAGE

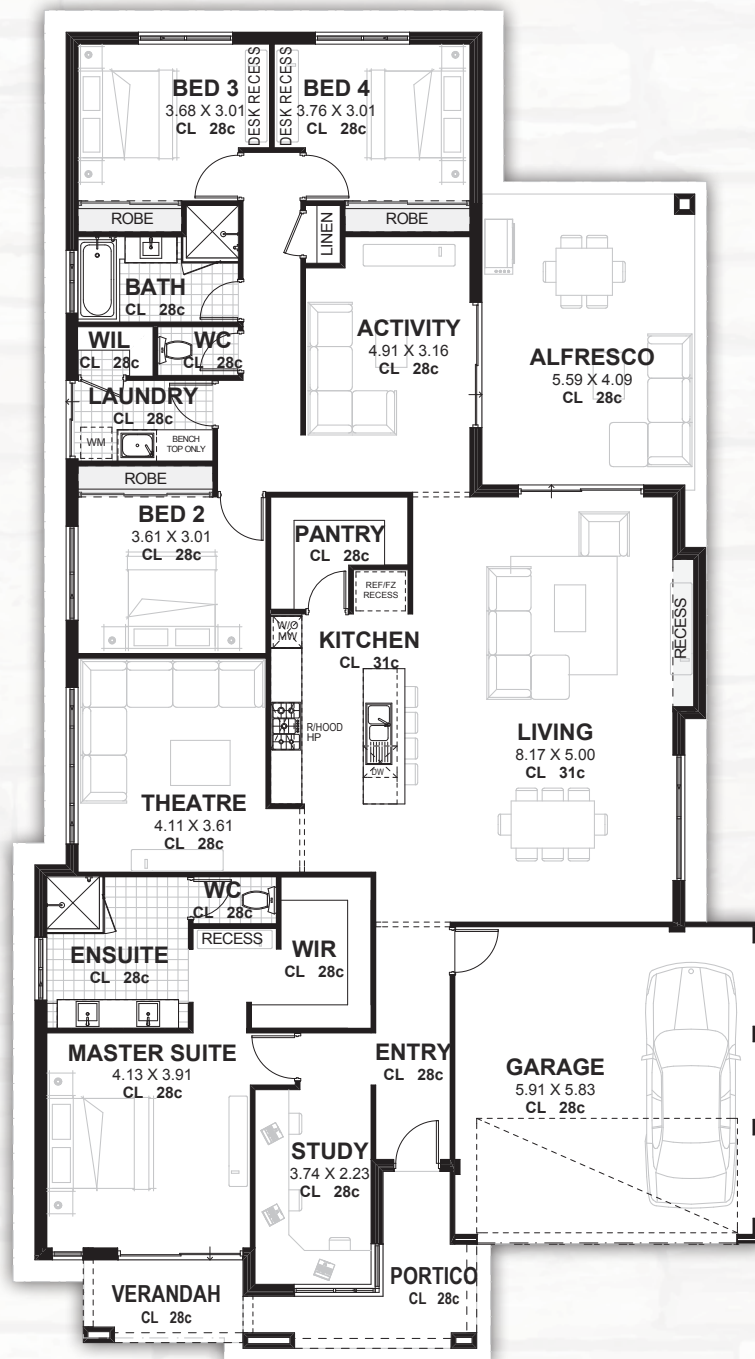


For illustration purposes only

LIVE YOUR BEST LIFE

THIS HOME IS PART OF THE

Vision SERIES



THE ACCLAIM ADVANTAGE

SUITABLE FOR FRONTAGES FROM 15 METRES

HOW IT MEASURES UP

Frontage

13.99m

Depth

25.29m

Area

Living

223.67m²

Garage

36.37m²

Alfresco

21.88m²

Portico

8.10m²

Verandah

4.88m²

GRAND TOTAL

294.90m²

