



HOUSE & LAND PACKAGE **\$789,990**

6B RADNEY STREET, WILLAGEE 6156



### HOUSE FEATURES

This contemporary style home offers Master bed on ground floor with spacious north facing living and outdoor areas.

- Reverse Cycle Air Conditioning.
- Stone tops throughout.
- Smeg appliances
- Quality fixtures & fitting.
- 25 Year Structural Guarantee.

### LAND DETAILS

Located in leafy quiet street close to parklands and shops.

- Large north facing back yard area.
- Bore included.
- Siteworks allowance included.

### ABOUT NOVUS HOMES

As a luxury home builder we're committed to delivering homes that epitomise the very best that life has to offer. It always has been, ever since our business began back in 1993. Since then we have built hundreds of custom designed homes and are now proud to be known as one of the best, and most awarded, builders in Perth.

### CONTACT

**Colin Samwell**

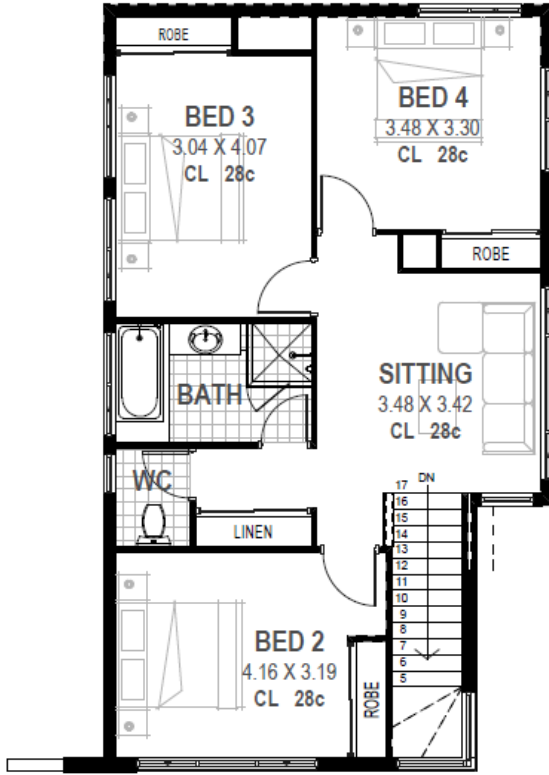
**P: 0412 099 609**

**E: [colin.s@novushomes.com.au](mailto:colin.s@novushomes.com.au)**

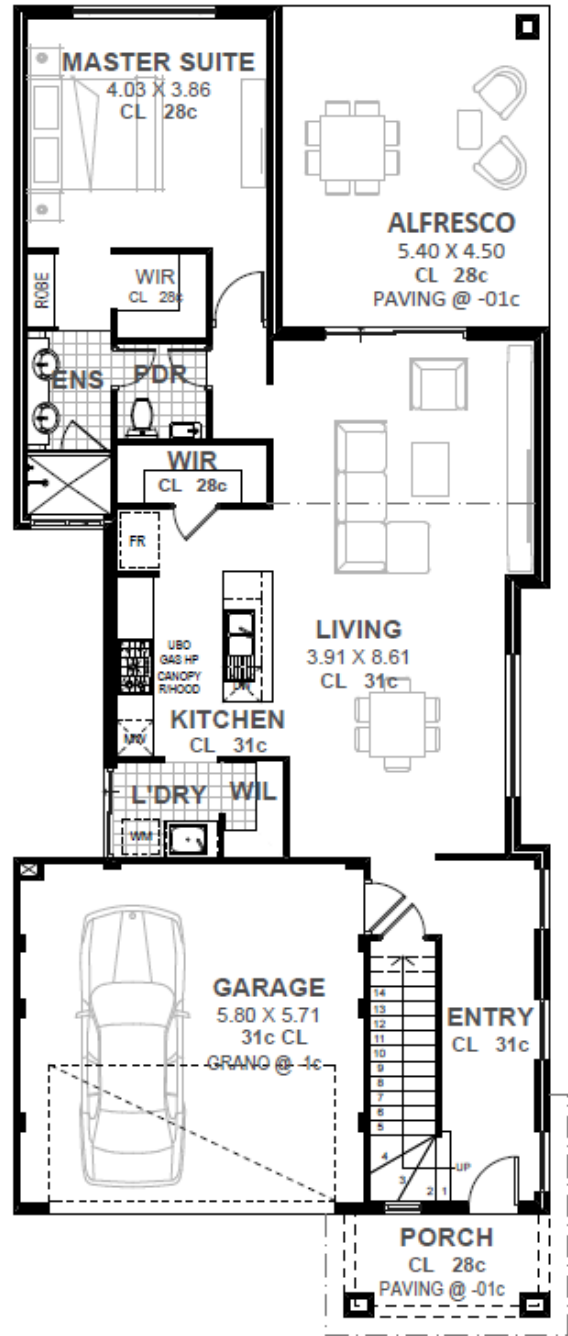


32 Mumford Place Balcatta WA 6021 | Telephone: 08 9240 8001 | BC8967 | [www.novushomes.com.au](http://www.novushomes.com.au)

Plans and Photographs are for illustration purposes only and may depict fixtures, finishes and features not supplied or included by Novus Homes. The Design and Specification are subject to Council and Engineers approval. Site works and finishing or decorator items are not included in any pricing unless specified. The Land value component does not include stamp duty or settlement costs unless specified. Please contact your Novus Homes Sales Consultant directly for further clarification of all pricing and inclusions.



UPPER FLOOR



GROUND FLOOR



**THE FINESE**

SUITABLE FOR 10 METRE NARROW LOT

**HOW IT MEASURES UP**

<b>Frontage</b>	8.99m
<b>Depth</b>	22.01m
<b>Area – Ground Floor</b>	
Living	112.80m <sup>2</sup>
Garage	34.89m <sup>2</sup>
Alfresco	24.30m <sup>2</sup>
Portico	5.92m <sup>2</sup>
<b>Total – Ground Floor</b>	<b>177.91m<sup>2</sup></b>



<b>Area – Upper Floor</b>	
Living	78.11m <sup>2</sup>
<b>Total – Upper Floor</b>	<b>78.11m<sup>2</sup></b>
<b>GRAND TOTAL</b>	<b>256.02m<sup>2</sup></b>