



## HOUSE & LAND PACKAGE \$999,400

LOT 704 REEFVIEW RISE, BURNS BEACH 6028



### HOUSE FEATURES

This well-appointed home has a wide balcony offering views to the front from the Master Bedroom and Retreat.

- Separate Theatre and Study.
- Scullery & Smeg Appliances
- Hobless Semi frameless showers
- Stone benchtops throughout
- Alarm System
- LED lighting package
- Keyless Entry
- Reverse cycle air conditioning

### LAND DETAILS

Burns Beach is the ideal place for your family to enjoy ocean living like no other.

- Site works allowance included.
- Stamp Duty Allowance Included

### ABOUT NOVUS HOMES

As a luxury home builder we're committed to delivering homes that epitomise the very best that life has to offer. It always has been, ever since our business began back in 1993. Since then we have built hundreds of custom designed homes and are now proud to be known as one of the best, and most awarded, builders in Perth.

### CONTACT

**Greg & Melanie Coddington**

**P: 0416 194 177**

**P: 0416 194 195**

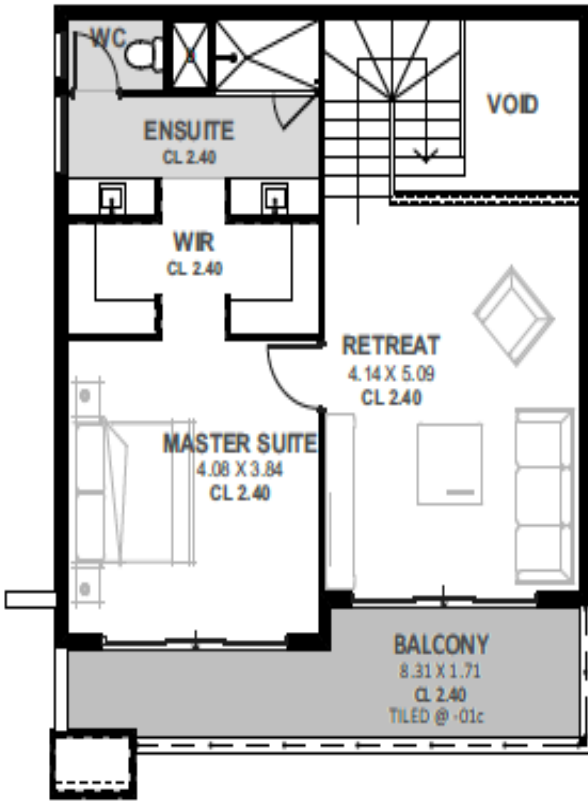
**E: [gregmelanie@novushomes.com.au](mailto:gregmelanie@novushomes.com.au)**



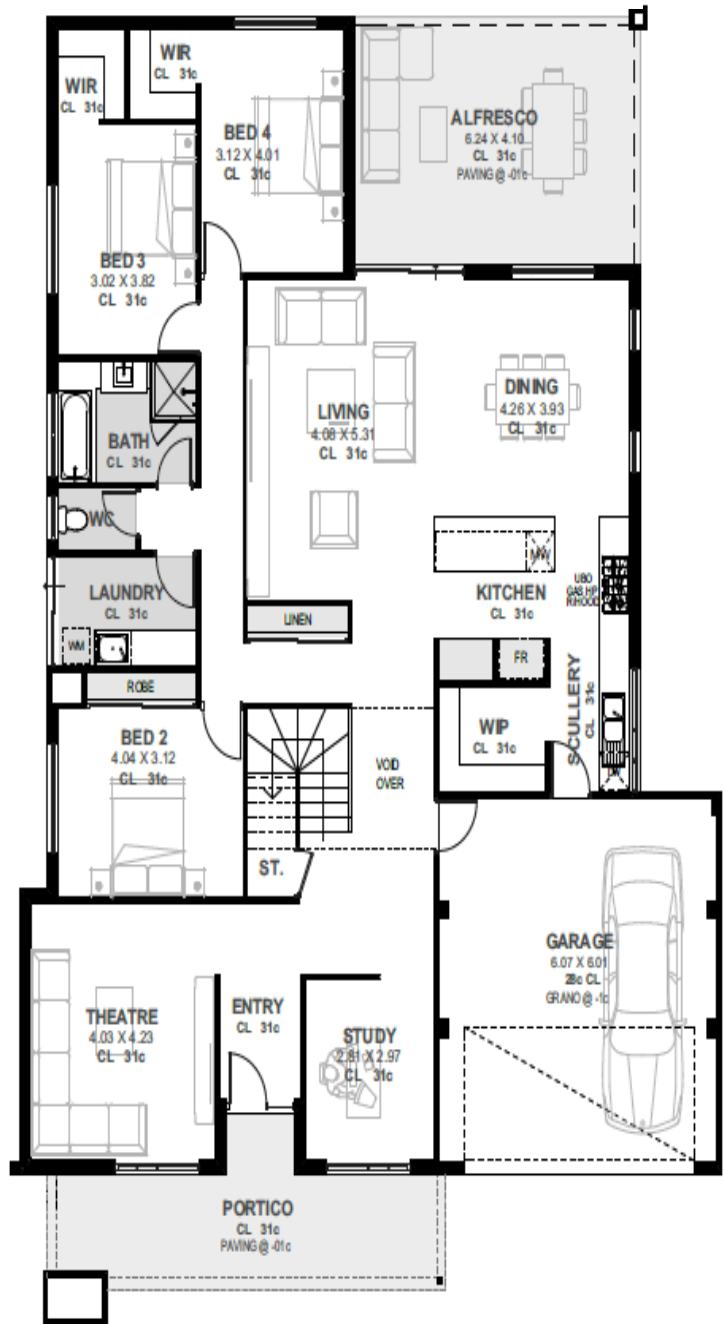
32 Mumford Place Balcatta WA 6021 | Telephone: 08 9240 8001 | BC8967 | [www.novushomes.com.au](http://www.novushomes.com.au)

Plans and Photographs are for illustration purposes only and may depict fixtures, finishes and features not supplied or included by Novus Homes. The Design and Specification are subject to Council and Engineers approval. Site works and finishing or decorator items are not included in any pricing unless specified. The Land value component does not include stamp duty or settlement costs unless specified. Please contact your Novus Homes Sales Consultant directly for further clarification of all pricing and inclusions.

# GROUND FLOOR



## UPPER FLOOR



### THE MODE

SUITABLE FOR FRONTAGES FROM 17 METRES

### HOW IT MEASURES UP

<b>Frontage</b>	<b>15.29m</b>
<b>Depth</b>	<b>21.59m</b>
<b>Area – Ground Floor</b>	
Living	195.26m <sup>2</sup>
Garage	38.35m <sup>2</sup>
Alfresco	25.68m <sup>2</sup>
Porch	18.82m <sup>2</sup>
<b>Total – Ground Floor</b>	<b>278.11m<sup>2</sup></b>



<b>Area – Upper Floor</b>	
Living	70.82m <sup>2</sup>
Balcony	14.77m <sup>2</sup>
<b>Total – Upper Floor</b>	<b>85.59m<sup>2</sup></b>
<b>GRAND TOTAL</b>	<b>363.70m<sup>2</sup></b>